

BIG CEE ENGINEERING

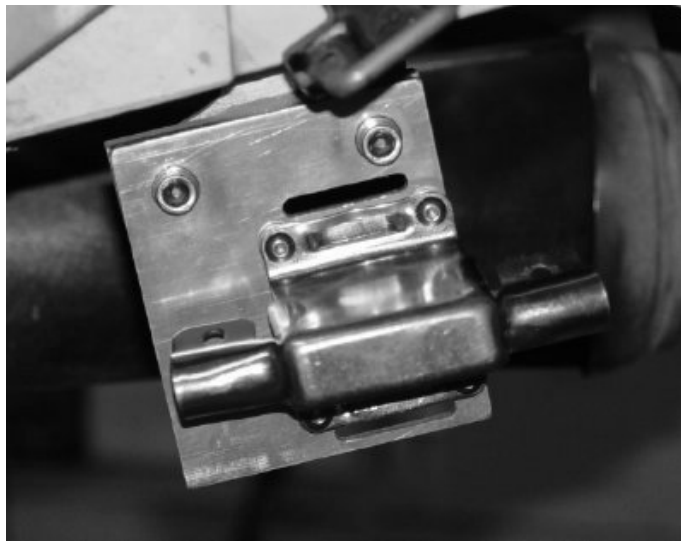
627 N Michigan Ave #5 Pasadena, CA 91106
bigcee@bigcee.com www.bigcee.com

KLR650 side-mount Enduro Jug bracket installation instructions

This part is for installation only on KLR650s with an empty smog canister bracket on the left side of the subframe. It is **ILLEGAL** to remove smog equipment on a bike so equipped, and this part should only be mounted on bikes that did not come from the factory with a smog canister.

- 1) Orient the bracket such that the two M6 mounting holes are at the top, and the hole pattern for the Enduro Jug bracket is to the right.
- 2) Using the four, M4 button-head screws and nylon spacers, attach the Enduro Jug bracket to the mount. (The Maier bracket is included with the Enduro Jug.) Use Loctite!
- 3) Using the two, M6 socket-head screws, lockwashers and spacer, attach the bracket assembly to the smog canister mounting pad. Again, use Loctite. The top edge of the spacer should be aligned with the top edge of the bracket, such that the spacer doesn't interfere with the strap slots.
- 4) The Enduro Jug fits best with the cap pointing rearward. The spacer is required for the 2-quart jug; you may not have to use it for 1-quart jugs, but you will need to replace the socket-head screws with 20mm long ones, or cut the included ones down.
- 5) Route the hold-down strap through the slots in the plate, rather than the slots in the Maier bracket.
- 6) If you are doing extensive offroading with this unit, I strongly recommend replacing the Velcro strap with a camping-type nylon strap with a ladderlock buckle. The Velcro strap holds great for a while, but as it gets dirty and/or wet, it doesn't hold as well, and the jug could fall off. The slots in the Big Cee mount will accept up to a 1" wide strap.

Consult Maier for compatibility of different liquids with their Enduro Jugs. If you are carrying gasoline, be aware that it is highly flammable, and Big Cee Engineering is not responsible for any mishandling or accidents involving use of the Enduro Jug Bracket.



The fine print: I will gladly replace any parts that are defective through manufacture. However, because of the wide variety of riding styles and trail conditions that these parts will encounter, I cannot guarantee their survivability in all conditions.

